

mindray

CL-1200i

Chemiluminescence Immunoassay System

Simple yet Robust

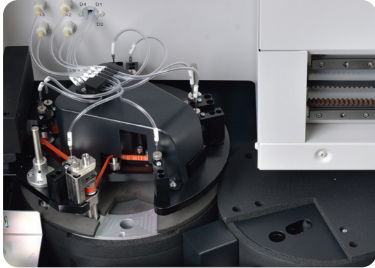




CL-1200i

CL-1200i

Chemiluminescence Immunoassay System



Enhanced Reaction System

4-phase magnetic separation with precisely controlled temperature
Consistent performance reliability with enhanced PMT detection system
Non-touch vortexer mixing for reaction solution without any contamination

Simple yet Ro



Sample & Reagent Probe

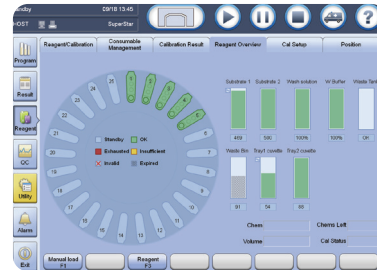
Precisely controlled syringe motors offer high precision aspiration
Intelligent liquid level detection, clot detection, vertical and horizontal collision protection
Efficient interior & exterior probe wash with high pressure wash buffer
Programmable enhanced probe wash with detergent



Sample Handling

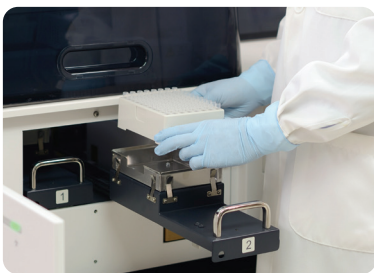
Samples loading and offloading continuously by sample racks
Unified sample racks with detachable adaptor
Rack status real-time indicating on lane numbers
STATs prioritized fast

bust



Intuitive Software Interface

Unified software interface, significantly reduces training effort
Smooth interchange by intuitive software navigation
Easy access to touch screen monitor with swing arm (optional)



Consumables Management

Random access for cuvette loading without pause or stop
88*2 cuvettes in one batch, 200 cuvettes per waste bag
Cuvettes & waste bag status real-time indicating



Reagent & Substrate Handling

Easy for reagent & substrate handling, liquid reagents ready-to-use
2°C~8°C non-stop refrigerated reagent carousel featured 25 positions
Same reagent pack size with CL-2000i (50 tests/100 tests per pack)
Reagents stable on board for up to 56 days

Test Menu

Thyroid FT3 FT4 T3 T4 TSH Anti-TG Anti-TPO Tg rT3 TRAB	Infectious Disease HIV Combo HBsAg Anti-HBs HBeAg Anti-HBe Anti-HBc Anti-HCV Anti-TP (Syphilis) HBeAg quantitative* Anti-HBc IgM*	Fertility Total β -HCG FSH LH Prolactin E2 E3 TESTO PROG Free testosterone* 17-OH PROG* SHBG* AMH* Diabetes Insulin C-peptide	Tumor marker CEA AFP CA125 CA15-3 CA19-9 FPSA TPSA NSE CYFRA 21-1 CA72-4 PG I PG II SCCA HE4 ProGRP CA50 CA242
Bone Metabolic Intact PTH Calcitonin Vitamin D total	Cardiac CK-MB Myoglobin Troponin I BNP		
Adrenal Function DHEA-S Cortisol ACTH	Liver Fibrosis LN HA PIIINP CIV	ToRCH Toxo IgG Toxo IgM Rubella IgG Rubella IgM CMV IgG CMV IgM HSV-1/2 IgG* HSV-1/2 IgM* HSV-1 IgG* HSV-2 IgG*	Anemia Ferritin Vitamin B12 Folate RBC Folate
Hypertension Angiotension I* Angiotension II* Renin Aldosterone	Growth Hormone hGH* IGF-1*		Inflammation PCT IL-6 Prepspsin
DS' Screening PAPP-A* Free β -HCG*			

*: in development

Technical Specifications

General Information

Throughput	Up to 180 tests/hour
Measurement Principle	Micron superparamagnetic particles platform with alkaline phosphatase (ALP) labeled reagents and AMPPD substrate

Sample Assembly

Sample Feeder	Continuous sample loading and offloading by sample racks
Sample Rack	10 positions per rack, same as BS-800/BS-2000/CL-2000i series
Sample Capacity	Up to 60 samples in one batch
Sample Probe	Steel probe, liquid level detection, clot detection, horizontal and vertical collision protection
Sample Volume	10 μ l~200 μ l, with increment of 1 μ l
Sample Dilution	Automatic dilution with 1: 2 ~ 1: 80

Reagent Assembly

Reagent Disk	25 reagent positions, continuous loading, real-time mixing for magnetic particles
Cooling System	2°C~8°C
Reagent Pack	50 tests per pack, 100 tests per pack
Reagent Scanning	Built-in/external bar code reader scanning
Reagent Probe	Steel probe, liquid level detection, bubble detection, horizontal and vertical collision protection
Reagent Volume	20 μ l~200 μ l, with increment of 1 μ l

Substrate System

Substrate Bottle	300/500 tests per bottle, bottom piercing
Substrate Loading	Capable of continuous loading during testing
Substrate Heating	Constant heating
Aspiration Volume	200 μ l

Magnetic Separation Unit

Separation Assembly	4-phase magnetic separation
Temperature	Accuracy: 37 \pm 0.3°C, fluctuation: \pm 0.2°C

Measurement and Reaction System

Detection Mode	Photon counting
Signal Detector	Photomultiplier (PMT) photon counter
PMT Calibration	LED reference module
Reaction Carousel	75 positions
Temperature	Accuracy: 37 \pm 0.3°C, fluctuation: \pm 0.2°C
Mixing Unit	Non-touch vortexer mixing

Cuvette Loading and Waste Collection

Cuvette	Disposable plastic cuvette
Cuvette Loading	88 cuvettes per tray, two trays can be loaded in one batch, continuous loading and offloading
Waste Collection	Waste container, 185 cuvettes per box

Working Conditions

Power Supply	110V/115V~, 60Hz; 220V-240V~, 50Hz; 220V/230V~, 60Hz
Input Power	2000VA
Operating Temperature	15°C~30°C
Relative Humidity	35%RH~80%RH, without condensation
Dimension	Main Unit: 1400mm*760mm*600mm (W*D*H) Weight: 225kg
Altitude Height	-400m~4000m